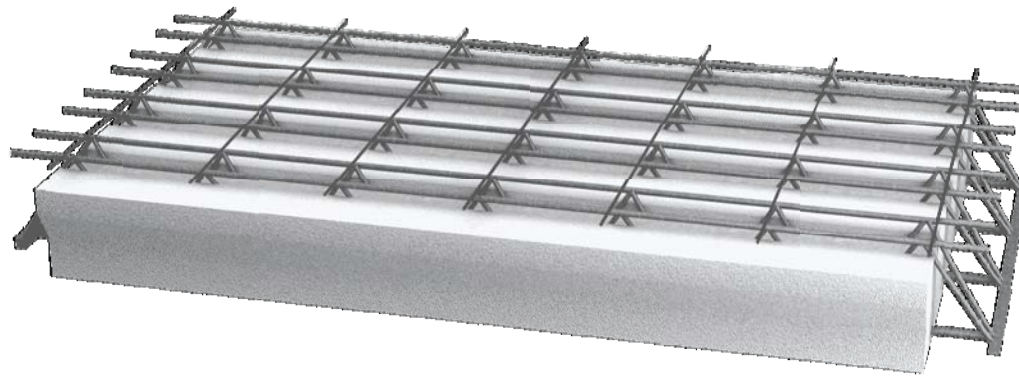
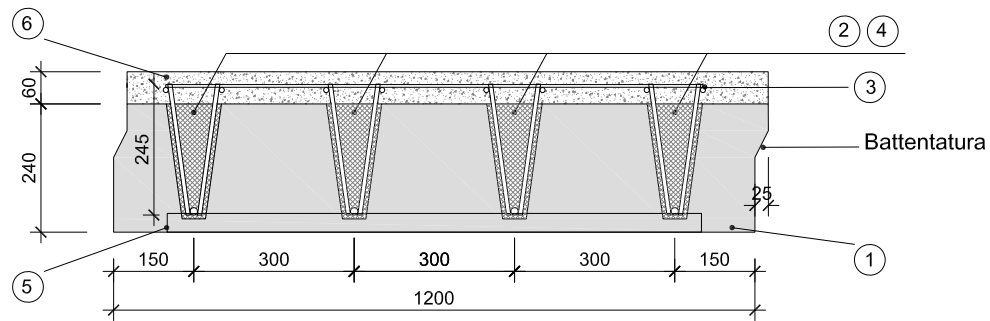
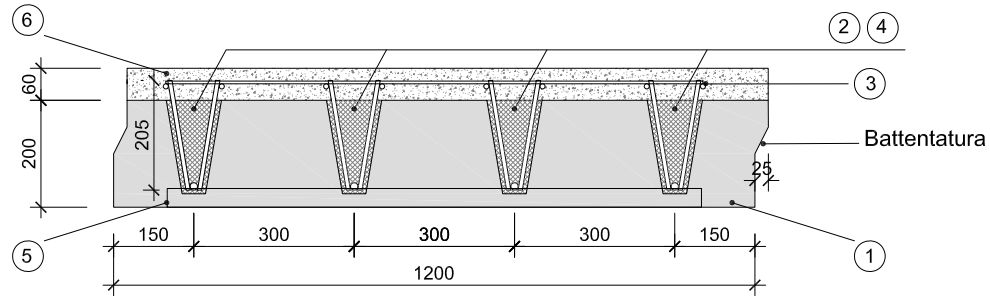


SEZIONE: Airfloor® tipologico (misure in [mm])



LEGENDA

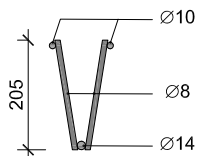
- 1- Pannello EPS sagomato
-H= 200 mm
-H= 240 mm
- 2- Baustrada B450C
-Traliccio H= 205 mm tipo 10/14/8 o 12/16/10
-Traliccio H=245 mm tipo 16/16/10
- 3- Rete monodirezionale Ø8/200
- 4- Cis alleggerito
- 5- Lama Appoggio
- 6- Cappa Collaborante in Calcestruzzo Strutturale

PESO PROPRIO SOLAIO

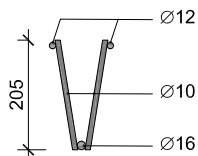
(escluso peso cappa collaborante spessore 6 cm)

Pannello EPS H=200 mm con Traliccio H= 205 mm tipo 10/14/8	1.99 kN/m ²
Pannello EPS H=200 mm con Traliccio H= 205 mm tipo 12/16/10	2.05 kN/m ²
Pannello EPS H=240 mm con traliccio H= 245 mm tipo 16/16/10	2.20 kN/m ²

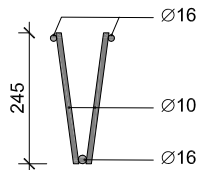
Traliccio H= 205 mm
tipo 10/14/8



Traliccio H= 205 mm
tipo 12/16/10



Traliccio H= 245 mm
tipo 16/16/10



TITOLO:
Title
DATA
Date

Sezione Airfloor®
2023

DISEGNO N°:
Draw n°
REV.
Rev.

AIR01
A

Tecnostrutture s.r.l.
Via Meusici, 26
30020 Noventa di Piave (VE) Italy

E mail: com@tecnostrutture.eu
www.tecnostrutture.eu
Tel. +39 0421.570870

RIPRODUZIONE E DIFFUSIONE VIETATA A TERMINI DI LEGGE
REPRODUCTION AND DIFFUSION LEGALLY PROHIBITED